

## Success Stories and Special initiatives by SMC

### **Best Practice -1**

**Contribution of SMC of PUPS Adhiyanallur, Parrangipet Block, Cuddalore District in building Compound Wall for the School**



**SMC of PUPS Adhiyanallur mobilized MLA Fund to build compound Wall for the school**

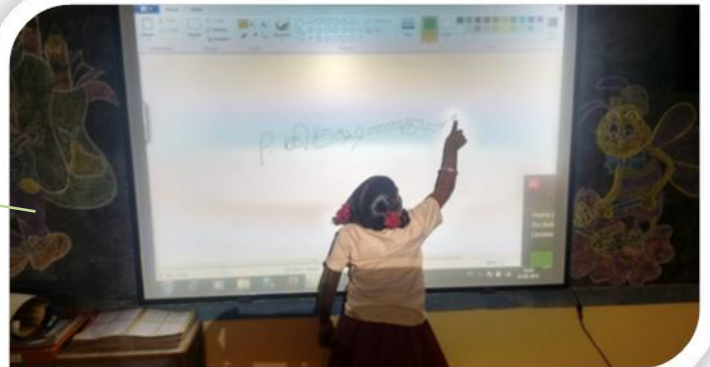
## **Best Practice -2**

**Contribution of SMC of PUMS, Chinnamuthur, Vellakovil Block, Erode District**



Air Conditioner  
provided by SMC for  
the Smart Class

Digital Board  
contributed by SMC



Computer and  
computer tables  
contributed by SMC



Computers and computer tables contributed by SMC

### **Best Practice – 3**

#### **Contributions of SMC in developing School Infrastructure**

*SMC members of Panchayat Union Middle School, 1-3 ward Uthiramerur, Uthiramerur block , Kanchipuram District, actively participate in the SMC meetings. During SMC meetings SMC members explore the shortcomings and demand better performance. The various initiatives of SMC members are*



- ❖ Introducing smart class with computer lab.
- ❖ Class rooms painted with pictures of natural sceneries and animals.
- ❖ Creating conducive environment for quality learning
- ❖ Provide internet facility.

### **Best Practice -4**

#### **Contributions of SMC in developing School Enrolment in PUMS. Gundada Kothagiri Block, The Nilgiris District**

The School Management Committee (SMC) of Panchayat Union Middle School, Gundada is formed and functioning according to RTE Act 2009. With



SMC members of PUMS kundada , Kothagiri Block, The Nilgiris cleaning their school campaus

the valuable guidance and brisk participation of SMC members the school is able to provide an energetic atmosphere to impart quality education to children.

The strength of the school was 24 in the academic year 2014-15. SMC members took an earnest effort and through door to door canvassing raised the strength to 66. Two teachers are appointed by SMC to handle newly started English medium sections. SMC members jointly removed the bushes around the school to make it clean.

### **Best Practice :5**

#### **Impact of SMC Training**

Name of the Block : Pattukkottai

Name of the school : PUMS- Manjavayal

School code : 33211203202

CRC level SMC Non Residential Training was conducted in all blocks in Thanjavur. SMC members understood the importance of their role in the development of school. They realized the importance of participation and involvement of SMC in the educational progress of the school children. Their active participation resulted in the contribution of Rs.1,51,000/- to PUMS Manjavayal, Pattukkottai.



SMC members of PUMS Manjavayal decided to deposit the amount. Accordingly the amount was deposited in the Indian Bank, Athirampattinam



branch, in the joint a account of the Head master and the chair man of School Management Committee.

The SMC's of PUMS Manjavayal proposed to use the interest received from the fixed deposit for the school development activities like blackboard painting , computer installation, sanitary condition, repair and maintenance of school building, compound walls, drinking water facilities etc.

### **Best Practice: 6**

### **Contribution of land of 20cents by the community**

A hamlet named Velampatti of Barkoor village belongs to Andhiyur union of



Erode district where 96 families are residing. This village is situated in the dense forest at a distance of 90 km from Andhiyur. 35 school age children of this habitation had to access their school at Nalloor, Karnataka by walking

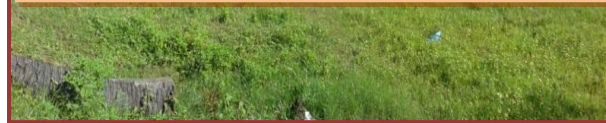
Mr.Sivanna, Handed over the Land Document.

nearly 5km through dense forest. Sarva Shiksha Abhiyan, Erode efforts to establish a new school for the children in their habitation itself could not materialize due to insufficient space for constructing a new school. A solution to this issue was found by the patron

Mr.Sivanna who has generously given his land of 20 cents for the school construction. At present the school construction work is in progress with the valuable assistance from the concerned Union Councilor.



New School building construction work is on progress



**Voice of parent** I am Rajiyammal, the mother of S.Sadasivam and S.Suresh. My children happen to discontinue their school due to lack of school access in our habitation. I extend my heartfelt gratitude to Sarva Shiksha Abhiyan, Erode for enlightening the life through education for this immaculate initiative taken in Velampatti village. I am proud and elated as I am a part of this initiative in which my family did the land contribution.



District Coordinator Visiting the Construction of New Primary, Velampatty , Anthiyur

## Best Practice -7

### Contribution of SMC in the enrolment of CWSN

The major thrust to SSA is the enrollment of CWSN children and mainstreaming them in the regular schools. The SMC members along with the school children of PUPS Kannankudi , Kannankudi Block ,Sivagangai District conducted an enrollment rally to bring awareness among the villagers



about the importance of education for CWSN and enrolment of CWSN in regular schools. 97 students were identified and 88 students have been admitted in regular schools, 9 children with severe profound disabilities are provided Home Based Training with regular school admissions and their attendance are maintained in the concerned schools.