

## School Management Software

School  
Management  
System For **SSA**



શિક્ષણનો અધિકાર

સર્વ શિક્ષા અભિયાન  
સૌ ભણે, સૌ આગળ વધે

**Gujarat Council of Elementary Education**  
**Sarva Shiksha Abhiyan Gujarat**

## Background:

It is necessary to introduce school M.I.S. for the schools to make use of e-Governance in school management by providing computer peripherals along with pre-loaded School Management Software (SMS). The decision-making processes could be facilitated as schools can compare and generate different statistics and reports. It can also save administrators valuable time which they can spend solving other school concerns.

Gujarat State has initiated a step towards introducing use of e-Governance in school management and fully assisted financially by State Government. The school level M.I.S.; "**School Management Software**" has been launched in 4200 Elementary Schools across the State for use of ICT in School Administration from June - 2015. It has covered school level all information including basic details of school, student, teacher profile and other related information from student enrolled in school to School leaving as well as all certificates, scholarship sheets, Results, Salary Sheets of Teachers, Library Management, Time Table and Content Management System.

## What is School Management System?

A school level M.I.S. introducing e-Governance in school management that enables decision-making processes as schools can compare and generate different statistics and reports. It can also save teachers valuable time which they can spend solving other academic concerns of the school. School management system provides the facility to carry out all day to day activities, making them fast, easy, efficient & accurate. This software is a simple yet powerful one point integrated platform.

School Management System is an inclusive school management / school administration software that is designed with a sole intention of supporting schools in effectively managing their school related operations and activities. It is a result of several rounds consultations with teachers at field level on reducing the management efforts and maximizing efficiency of school management systems. With the bunch of exceptional features it has, School Management Software has changed the way a school works and administers its day-to-day operations. In simple words, it has simplified the management efforts and emerged as a smart solution for e-age schools.

In brief, places where all student activities and operations can be managed at one go.

## Why it is required?

### a) **Simplifying Management Efforts**

It works as a personal assistant to school management and streamlines every administration activity at schools. It offers a convenient way to interact or communicate with your school community or others who are directly or indirectly a part of your school. It is an effective tool which can help you in managing information in the best way.

### b) **Maximizing efficiency of daily work**

It can just be easier to bring about a transformation in school administration. It can help to gain an insight into everything related to school and that too without wasting time on piles of records.

### c) **Reinforcing cross-departmental association**

It is designed and developed with high focus on administration processes. This software can truly simplify all tasks related to the management and supports bringing expected results. It facilitates with reports on anything (contextual information related to students or teachers or other staff members) and make smarter decisions.

### d) **Tracking student performance**

It facilitates to know everything about the students. It perfectly improves communication between teachers and the management. The reports can be viewed on attendance, performance at studies or in co-curricular activities etc. A look can be taken at the timetable, schedule of the week, reports on tests, exams etc.

### e) **Maximizing teacher performance**

Pressure to get good grades in school is not only the concern for students but also for teachers. To make the students perform better, teachers attempt every possible way and practices. Teachers work hard to identify best practices to support struggling students and to bring our more from best performing students. They constantly need to collect huge loads of operational data, reports submitted by students, communicate and collaborate with parents, other teachers, students and school management. The software gives a secure access to the teachers for powerful tools which help them to schedule and teach classes better, capture key operational data, communicate and collaborate well and submit reports to the school management.

### f) **Range of benefits to schools**

- Real-time update on students' attendance and progress report
- Creating student profile, School Leaving and other certificates, Identity Cards
- Generating details for Scholarship and other incentives

- Time Table generation and ease of work allocation class wise, subject wise, teacher wise
- Early intimation about the school holidays and events
- Support for CCE for Student wise progress updates
- Managing curriculum or content
- Real-time update on teachers' attendance
- Creating teachers profile and leave balance report
- Managing Library at a finger tip

**g) Special features to give handy tool to schools**

- Facilitating child wise information and their learning levels
- Availability of utility to generate UDISE Data Capture Format filled from the system as required on 30<sup>th</sup> September every year
- Easy to operate in both Online and Offline mode
- Automatic synchronization with Central Server as and when connected with Internet

**Objectives of School Management Software:**

- Better management of school operations
- Able to allocate more time for students
- Improved availability of transaction data
- Access to up-to-date information with data flow from School Management Committee (SMC) to State Project Office (SPO)
- Standardization of processes across School/Offices
- Effective monitoring and supervision at each level
- Sharing of information across concerned offices
- Automate all school task and bring under a common interactive platform
- Reduce manual work & data redundancy
- Increase data accuracy in reporting at different level

**Modules of the System:**

1. Master & School
2. Student
3. Time Table
4. Exam Menu
5. Content Menu
6. Employee Menu
7. Library
8. Utility Menu



## School Information:

Add School Information

Basic Detail

Address & Contact Detail

Bank Detail

ડાટાસ કોડ:\*

24010201020

શાળાનું નામ:\*

Demo School

શાળાનું ક્ષેત્રફળ (Sq. Meter):

464664

શાળાનો વિસ્તાર:\*

1-CITY

શાળાની કક્ષા:\*

10-Secondary with Higher Second

શાળાનું પ્રારંભિક ધોરણ:\*

5

શાળાનું ઉપલું ધોરણ:\*

4

શાળાનો પ્રકાર:\*

1-Boys School

સંચાલન:\*

6-Other

BRC થી અંતર (Km.):

3332

CRC થી અંતર (Km.):

3121

શાળા રોડ માર્ગે જોડાયેલ છે?:

1-Yes

સ્થાપના વર્ષ:\*

1995

માન્યતા મળેલ વર્ષ:\*

1909

અપગ્રેડેશનનું વર્ષ:

1900

નિવાસી શાળા છે. (પ્રાથમિક):

1-Yes

નિવાસી શાળા છે. (ઉ. પ્રાથમિક):

1-Yes

નિવાસી શાળાનો પ્રકાર:

CWSN માટે વિશિષ્ટ શાળા છે?:

1-Yes

પાળી પદ્ધતિ:

1-Yes

ધાર્મિક લઘુમતી શાળા છે?:

1-Yes

ધર્મનો પ્રકાર:

1-Hindu

માધ્યમ:

3-Gujarati

માતૃભાષા ભણાવે છે?:

1-Yes

માધ્યમિક બોર્ડ:

ઉ.માધ્યમિક બોર્ડ:

અક્ષાંશ:

12

રેખાંશ:

45

12

12

12

45

54

45

શિક્ષણનો અધિકાર

સર્વ શિક્ષા અભિયાન

સૌ ભણે, સૌ આગળ વધે

Upload Logo

Save

Close

## School DISE Report

BABAPUR PRIMARY SCHOOL

AT.BABAPUR,TA.DIST.AMRELI

Disse Code: 2000021256

Contact No: 2792230230

જિલ્લા શૈક્ષણિક માહિતી પત્રક (શાળાકીય માહિતી)

(એ) શાળાનું વિવરણ

શાળા કોડ નં: 2000021256

શૈક્ષણિક વર્ષ: 2014

1. શાળાનું નામ	BABAPUR PRIMARY SCHOOL
2. શાળા કક્ષા વિસ્તારમાં આવેલી છે. (ગ્રામ્ય - / શહેરી -)	2-RURAL
3. રહેઠાણ/આવાસનું નામ (ગ્રામ્ય વિસ્તાર) / સેવી, ફળીયુ અથવા	Bus Stop
ક. ગ્રામનું નામ (ગ્રામ્ય વિસ્તાર) / વોડ નં. (શહેરી વિસ્તાર)	Bopal
4. પીન કોડ	365610
5. ગ્રામ પંચાયતનું નામ (ગ્રામ્ય વિસ્તાર)	BABAPUR
6. ગ્રામ સંસાધન કેન્દ્ર (સી.આર.સી.)નું નામ	Gota
7. રેલ્વે-સ્ટેશનનું નામ	Daskroi
8. શૈક્ષણિક તાલુકાનું નામ	Ahmedabad
9. વિધાનસભા ક્ષેત્રનું નામ	Virangam
10. મ્યુનિસિપલ કોર્પોરેશનનું નામ (જો લાગુ પડતું હોય તો)	AMRELI
11. સર્કલનું નામ (જો લાગુ પડતું હોય તો)	AMRELI
12. કોન નંબર / મોબાઇલ નંબર	એસટીડી કોડ નં. એનડ વાઇડ નં. મોબાઇલ નં.
(1) શાળા/કેંદ્ર માલિક	2792230230 9825098250
(2) કાર્યકારી શિક્ષક	0
ઇમેઇલ	babapurpr@gmail.com

13. શાળાની કક્ષા

2-Primary with Upper Primary (1-8)

પ્રાથમિક (1-4) = 1, પ્રાથમિક સાથે ઉચ્ચાતર પ્રાથમિક (1-4) = 2, પ્રાથમિક સાથે ઉચ્ચાતર તમા માધ્યમિક / ઉચ્ચાતર માધ્યમિક (1-8) = 3, કુલ ઉચ્ચાતર પ્રાથમિક શાળા (1-4) = 4, ઉચ્ચાતર પ્રાથમિક સાથે માધ્યમિક / ઉચ્ચાતર માધ્યમિક (1-8) = 5, પ્રાથમિક સાથે ઉચ્ચાતર પ્રાથમિક અને માધ્યમિક (1-10) = 6, ઉચ્ચાતર પ્રાથમિક સાથે માધ્યમિક (1-10) = 7, કુલ માધ્યમિક (1-10) = 8, માધ્યમિક સાથે ઉચ્ચાતર પ્રાથમિક (1-10) = 9, કુલ ઉચ્ચાતર માધ્યમિક (11 અને 12) = 10

14. શાળાનું પ્રારંભિક ધોરણ

1

15. શાળાનું ઉપલું ધોરણ

8

16. શાળાની પ્રકાર: કુમાર શાળા - 1, ક-ચા શાળા - 2, મિશ્ર શાળા - 3

3-Co-education School

17. શાળાનું સંચાલન

3-Sthanik Svaraj Sanstha

(શિક્ષણ વિભાગ (રાજ્ય સરકાર સંચાલિત) 1, આઈજીપી વિદ્યાલય 2, સ્થાનિક સ્વયં સંસ્થા 3, નિર્ભાવવાળા મેળવતું ખાનગી શૈક્ષણિક સંસ્થા 4, મેળવતું ખાનગી શૈક્ષણિક સંસ્થા 5, કો-ઈજીપી વિદ્યાલય 6, અન્ય 7, ક-ચા શિક્ષક-9, અમાન્ય શાળા-10, માન્ય મદરસા(વકફ) / મદરસા બોર્ડ-11, અમાન્ય મદરસા-12, મ્યુનિ. કોર્પોરેશન (એમ.એસ.સી.)-13

18. શાળાનું અંતર

(એ) પ્રાથમિક શાળાથી નજીકની સરકારી / નિર્ભાવવાળા મેળવતું ખાનગી ઉચ્ચાતર પ્રાથમિક શાળા 10KM Enter 999 if the nearest Govt/Govt Aided School is in Same Capuse

(બી) ઉચ્ચાતર પ્રાથમિક શાળાથી નજીકની સરકારી / નિર્ભાવવાળા મેળવતું ખાનગી માધ્યમિક શાળા 20KM

19. શાળા કોડ માર્ગ જોડાયેલ છે. (હા- / ના-)

1-Yes

20. શાળાનું સ્થાપના વર્ષ

2000

21. શાળાનું માન્યતા મળેલ વર્ષ

પ્રારંભિક શિક્ષણ 2001

22. ઉચ્ચાતર માધ્યમિક

23. ઉચ્ચાતર માધ્યમિક

24. અપગ્રેડેશનનું વર્ષ: પ્રાથમિક/માધ્યમિક ઉચ્ચાતર પ્રાથમિક

2003

25. પ્રારંભિક માધ્યમિક

## Student Detail

Student Detail Form

Basic Detail

Leave Details

Personal Details

જ.ર.નં\*

3211

બાળક નું યુનિક આઈડી

240515654665465465

આધાર નંબર

522551554654

NO PHOTO

Upload

Surname (અટક)

ગુજરાતી: Sanjay

અંગ્રેજી: Surname

First Name (નામ)

S

First Name

Last Name (પિતાનું નામ)

Patel

Last Name

જન્મતારીખ:

26/03/2002

જન્મસ્થળ:

Rajkot

લિંગ:

1-Male

દાખલ તારીખ:

26/03/2015

દાખલ ધોરણ:

1

દાખલ વર્ગ:

A

પૂર્વશાળા:

School

ધર્મ:

1-Hindu

ધર્મની જાતિ:

Patel

કક્ષા:

2-S.C.

શાળામાં ભણે છે કે કેમ?:

2-No

Save

Reset

Close

## School Leaving Certificate

BABAPUR PRIMARY SCHOOL

AT.BABAPUR,TA.DIST.AMRELI

Dise Code: 2000021256

Contact No: 2792230230

Student Leave Certificate

Student Gr. No. : 2

LC. No. : 122

Education Year : 2014-15

Student Name :

શવળ કર્ણ ચેતનભાઈ

Religion & Cast :

HINDU RAVAL

Birth Place :

PATAN

Birth Date :

Last School Name :

NEW ADMISASION

School Admision Date (With Std.):

Standard 1

School Leave Date :

Current Std & Since :

Standard 1 Since In

Leave Reason :

hvj.gvhkvjhvhjvhvj

Progress :

Better

Conduct :

Good

Total Working Days :

0 Out of Present Days : 0

Fee Paid or Free? :

Yes

Comment :

Note : No change in any entry in this certificate shall be made except by authority issuing it and any infringement of this requirement is liable to involve to imposition of penalty such as that of restriction. Fill with ink.  
Certified that the above information is in accordance with School Register.

Date : 01/01/2015

Class Teacher Signature

Observer Signature

Principal Signature

Created By admin

Created on 01, January 2015

## Class Timetable

**BABAPUR PRIMARY SCHOOL**  
**AT.BABAPUR,TA.DIST.AMRELI**

**Dise Code: 2000021256**

**Contact No: 2792230230**

Class :6-A

	તાસ-1	તાસ-2	તાસ-3	તાસ-4	તાસ-5	તાસ-6	તાસ-7	તાસ-8
સોમવાર	Maths (GRK)	Social Science (VM)	Gujrati (VM)	English (GRK)	Science & Technology (KPM)	Sanskrit (VM)	Gujrati (VM)	Science & Technology (KPM)
મંગળવાર	Maths (GRK)	Social Science (VM)	Science & Technology (KPM)	English (GRK)	Science & Technology (KPM)	Sanskrit (VM)	Social Science (VM)	Hindi (TBD)
બુધવાર	Maths (GRK)	Social Science (VM)	Science & Technology (KPM)	English (GRK)	Work Experience (GRK)	Gujrati (VM)	Computer (TBD)	Drawing (GRK)
ગુરુવાર	Maths (GRK)	Social Science (VM)	Gujrati (VM)	English (GRK)	Science & Technology (KPM)	PT (GRK)	Computer (TBD)	Hindi (TBD)
શુક્રવાર	Maths (GRK)	Social Science (VM)	Gujrati (VM)	English (GRK)	Work Experience (GRK)	Drawing (GRK)	PT (GRK)	Hindi (TBD)
શનિવાર	Hindi (TBD)	Maths (GRK)	Hindi (TBD)	Computer (TBD)	Work Experience (GRK)	Free	Free	Free

**Created By admin**

**Created on 01, January 2015**

## Teacher Information

કર્મચારીનું નામ

PAN નંબર

Sunil Kanala

DAIPK10204

Sangita Lamba

554654656

Official Details

કર્મચારીનું નામ\*

Sunil Kanala

લિંગ\*

1-Male

જાતિ\*

1-General

જન્મતારીખ\*

16/03/1991

નિમણુંક ક્યાં વિભાગમાં થયેલ છે?

Primary (1-5)

ભણાવે છે?

1-Yes

કક્ષા (ફોર્મ) \*

1-Chief Teacher

કયું ધોરણમાં ભણાવે છે?

1

જ્યારથી એ ધોરણમાં સંભાળે છે?

16/03/2015

કયા વિષય માટે નિમણુંક થયેલ છે?

Computer

ભણાવતા મુખ્ય વિષય ૧\*

Computer

ભણાવતા મુખ્ય વિષય ૨\*

Drawing

નિમણુંકનો પ્રકાર\*

1-Permanent

પેન્શન પ્રકાર

GPF

વિકલાંગતાનો પ્રકાર

2-Physical handicapped

ફાલ કાર્યરત છે?

1-Yes

કયો પગાર ધોરણ છે?

First

બેંક ખાતા નંબર:

98798798465465987546

PAN નંબર:

DAIPK10204

GPF ખાતા નંબર

65465465465465465465

CPF ખાતા નંબર

EPIC નંબર

9223372036854775807

PRAN નંબર

65465465465465465465

બેઝીક પગાર\*

50000

પુરા પગારની તારીખ\*

16/03/2015

ઈન્ડીમેન્ટ તારીખ:

16/03/2015

નિવૃત્તિની તારીખ:

01/07/2049

વારસદારનું નામ:

AAASI

Recruitment Details

Qualification Information

Personal Details

Save

Delete

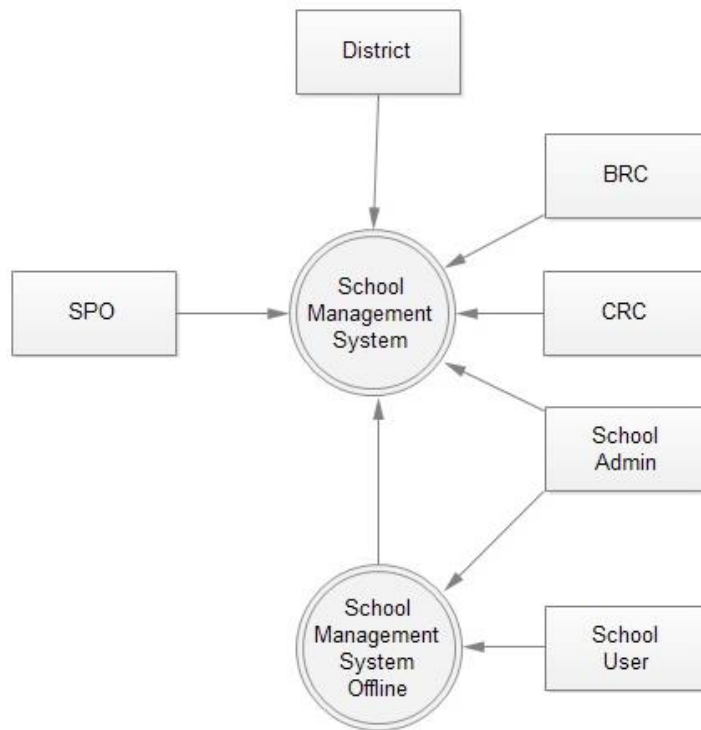
Reset

Close

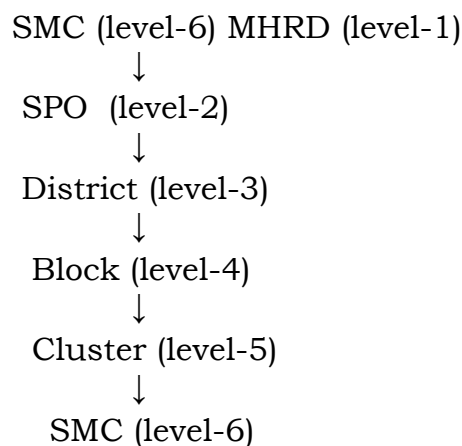
## Architecture of School Management Software:

- Application developed **offline for school level** and online synchronise with central server

### The System Context



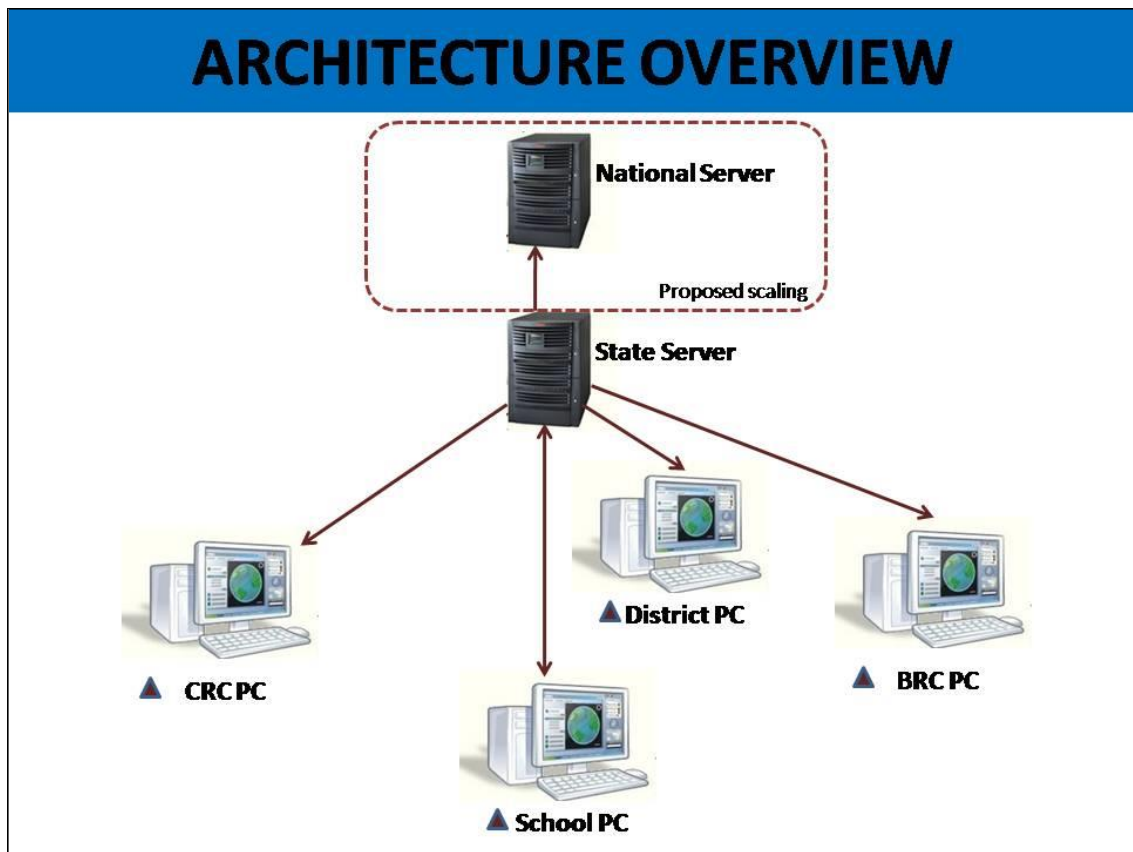
- Provided real-time information for decision making
- Monitoring from all the level (State, District, Block, Cluster, School)
- School Management hierarchy is as follows



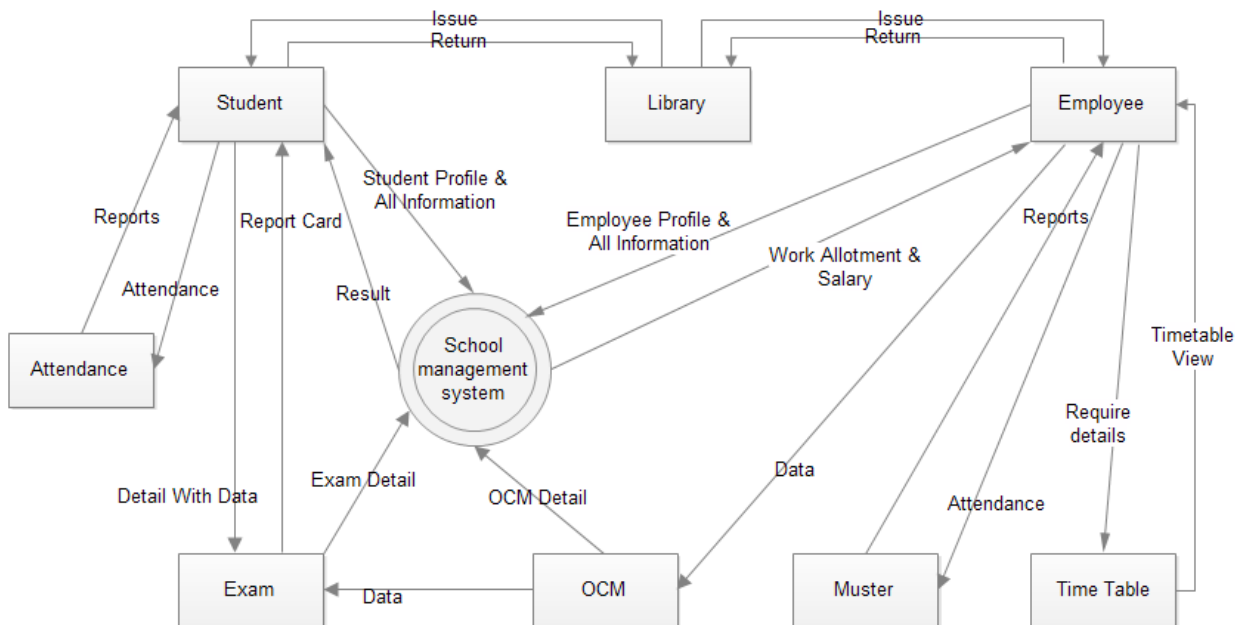
- Data flow from School to State may be scalable at National level along with system architecture as under:



# ARCHITECTURE OVERVIEW



## Dataflow diagram



## **Front-end and back-end used:**

### **Central Application:**

Front End: PHP

Back End: SQL Server

### **School User Application:**

Front End: PHP

Back End: My SQL

## **Different Scenario for implementation:**

Scenario 1: The schools where internet is available:

- They can directly synchronize their data with live server and also get updates and data from the server.

Scenario 2: The schools where internet is not available:

- They can take data on pen drive and sync after login to central portal using their credentials and upload the data, at the time of uploading data, server will also give some files for new updates and data if any available for the school.

## **Applications of School Management Software at different level:**

### **At School Level:**

- Better management of school operations like Student-Teacher Profile Management, Grade wise Time Table Generation and Updation, Teacher-Student Attendance Management, Exam, Results and Library Management etc.
- Administrative work make easy, teachers can easily access desired information and print required reports, certificate and mark sheets and spend more time towards teaching rather than preparing reports and certificates manually.
- Ability to generate UDISE Data Capture Format filled from the system as required on 30<sup>th</sup> September every year
- School would not be bothered for Information as it reduce manual work & data redundancy

### **At Block, District & State Level:**

- It enables real time monitoring for School level Management, Classroom Transactions, Teacher-Student Attendance, Exam, Results and other academic activities
- Generating summarized reports of the school data like School Infrastructure, Incentives/Scholarships/Grants to schools and beneficiaries, Student Strength, Gender wise strength, Category & Religion wise strength etc.
- Identification of thrust area in the context of absent students, attendance, learning levels, facilities gaps etc. for delivery of efforts
- Circulating important instructions / files to schools using this software
- Evaluating school's education performance, activity and teacher's training and details related to their work load.