



An ISO 9001:2015 certified



**School Education and Literacy Department,  
Govt. of Jharkhand**

**Jharkhand Education Project Council**

# Learning Assessments in Jharkhand



# Learning Assessments in Jharkhand

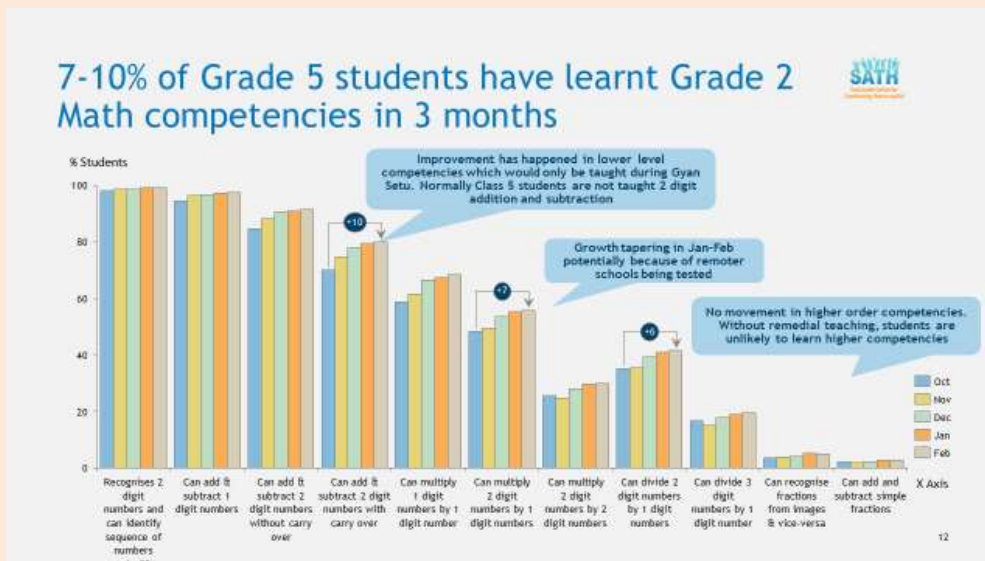
Even a year or two ago, the quality of learning data that was available in Jharkhand was very poor. Most learning data (primarily SA1/SA2) was undigitised, had vast data errors, and was not available for all school or children. Most importantly, data collected was never used for decision making. However, under Project SATH, Jharkhand has taken several innovative steps to move towards a system where live and accurate learning data is available at a granular level across the entire state and frequently analysed and used. Jharkhand is slowly building one of the most comprehensive learning data systems in the country. This has been achieved through 3 specific initiatives:

- 1) Spot Testing
- 2) Learning Tracking Format
- 3) OMR based Assessments

## Spot Testing

Jharkhand has launched Spot Testing, a system under which BRP/CRPs assess the learning levels of 3 random students in every school during a school inspections. Each student is tested across Hindi, Math, and English across a variety of different learning objectives. Each BRP/CRP was given state-level training in the detailed methodology and standard operating procedure for conducting such spot testing.

As a consequence of spot testing, Jharkhand today collects learning outcome data across 2L children per month. This is roughly 5% of all children in the state. The data has been verified and cross-checked with a series of logical checks and field validations to ensure high level of accuracy. Changes in the data over time are accurate to the degree of 0.5-1%. The data is live and made available to all stakeholders in the system.



Given the scale, granularity, accuracy and frequency, It is safe to say that Jharkhand has *one of the best and most detailed learning data systems in the world*. Learning data is now available to a level of granularity as seen above. Similar data is available across all competencies of English/Hindi reading, writing and speaking as well.

This data is *already being used* for a variety of decision making:

- District and block-wise analysis of performance every month
- Identification of top and bottom performing schools
- Impact assessments of specific initiatives
- Usage of learning data in district & block review to determine specific action plans
- Identification of specific competency gaps to determine teacher training needs
- Identification of required changes in textbooks and curriculum
- Accountability and rewards systems

### **Learning Tracking Format**

In a manner similar to spot testing, teachers are required to upload detailed assessment data across the same competencies for every student at the end of every month. This allows the student to collect student-wise learning data every month. Spot testing data is cross-checked against LTF on a live basis to ensure that teachers report learning outcome data accurately and honestly.

Teachers are supposed to complete the LTF module on their tabs. However, because of election-related issues, tab usage has been suspended in the field. Jharkhand hopes to scale up adoption of LTF in the coming months and ensure 100% collection of monthly child-wise learning data in the next 6 months.

### **OMR Assessments**

In addition, Jharkhand has converted Class 8,9, and 11 Standard exams to OMR based assessments in 2019. All concerned teachers and students were given extensive training in the use of OMR based assessments. This has allowed for the easy collection, analysis, and declaration of Board Results in record time. Over the next year, Jharkhand will convert all SA1/SA2 exams of all classes to OMR based assessments.

Data from the OMR based Board Exams are being cross checked against LTF/Spot Testing data and used to identify specific students and schools in need of special classes, remedial education etc. as well as reward and support high performing students.